

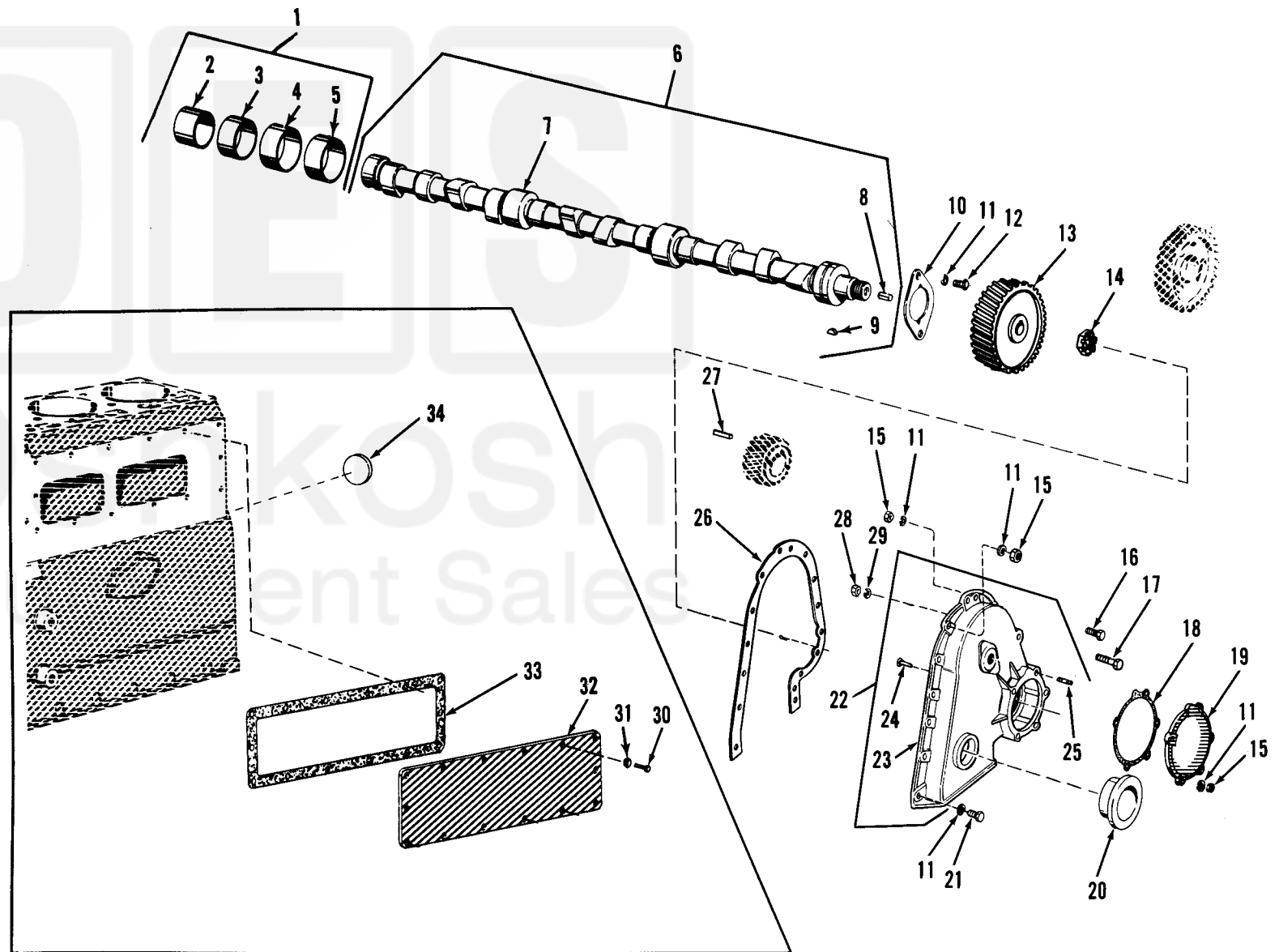
Current part is item (18) on diagram. Available at www.oshkosequipment.com

| (1) SMR Code | (2) Federal Stock Number | DESCRIPTION | UNIT of meas | Qty inc. in Unit | 30-day DS maint allowance | | | 30-day GS maint allowance | | | 1-yr alw per 100 equip cnt- gcy | Depot maint alw per 100 equip | Illustration | |
|--------------------|-----------------------------------|---|--------------------|---------------------------|------------------------------|--------------|---------------|------------------------------|--------------|---------------|---|--|----------------------|--------------------|
| | | | | | (a) 1-20 | (b) 21-50 | (c) 51-100 | (a) 1-20 | (b) 21-50 | (c) 51-100 | | | (a) Figure No. | (b) Item No. |
| | | Reference Number & Mfr. Code | | | | | | | | | | | | |
| | | Usable On Code | | | | | | | | | | | | |
| PAHZZ | 6680-179-5125 | SLEEVE: TACHOMETER DRIVE 10889925 (19207) | EA | 1 | | | | * | * | * | * | * | 6 | 8 |
| PAHZZ | 5315-011-2139 | KEY,WOODRUFF: GEAR MTG 112139 (24617) | EA | 1 | | | | * | * | * | * | * | 6 | 9 |
| PAHZZ | 2815-861-3831 | THRUST PLATE, CAMSHAFT: 10889837 (19207) | EA | 1 | | | | * | * | * | * | * | 6 | 10 |
| PAFZZ | 5310-959-4675 | WASHER, LOCK: THRUST PLATE, GEAR COVER AND ACCESS COVER MTG MS35340-46 (96906) | EA | 15 | * | * | * | * | * | * | * | * | 6 | 11 |
| PAHZZ | 5305-269-3211 | SCREW, CAP, HEXAGON HEAD: THRUST PLATE MTG MS90725-60 (96906) | EA | 2 | | | | * | * | * | * | * | 6 | 12 |
| PBFZZ | 2815-177-9209 | GEAR, CAM SHAFT TIMING: 10889822 (19207) | EA | 1 | * | * | * | * | * | * | * | * | 6 | 13 |
| PAFZZ | 5310-930-7979 | NUT, SELF-LOCKING, HEXAGON: GEAR MTG 11602502 (19207) | EA | 1 | * | * | * | * | * | * | * | * | 6 | 14 |
| PAFZZ | 5310-732-0558 | NUT, PLAIN, HEXAGON: GEAR COVER AND ACESS COVER MTG MS51967-8 (96906) | EA | 6 | * | * | * | * | * | * | * | * | 6 | 15 |
| PAFZZ | 5305-269-3213 | SCREW, CAP, HEXAGON HEAD: GEAR COVER TO FRONT PLATE MTG MS90725-62 (96906) | EA | 1 | * | * | * | * | * | * | * | * | 6 | 16 |
| PAFZZ | 5305-050-1077 | SCREW, CAP, HEXAGON HEAD: GEAR COVER TO FRONT PLATE MTG MS90725-118 (96906) | EA | 1 | * | * | * | * | * | * | * | * | 6 | 17 |
| PAFZZ | 2910-862-9065 | GASKET: ACCESS COVER MTG 10889724 (19207) | EA | 1 | * | * | * | * | * | * | * | * | 6 | 18 |
| PAFZZ | 5340-450-6720 | COVER, ACCESS: INJECTION PUMP DRIVE 10951005 (19207) | EA | 1 | * | * | * | * | * | * | * | * | 6 | 19 |
| PAFZZ | 2815-808-7366 | DEFLECTER, DIRT AND LIQUID: GEAR COVER 11610423 (19207) | EA | 1 | * | * | * | * | * | * | * | * | 6 | 20 |
| PAFZZ | 5305-269-4511 | SCREW, CAP, HEXAGON HEAD: GEAR COVER TO FRONT PLATE MTG MS90725-63 (96906) | EA | 6 | * | * | * | * | * | * | * | * | 6 | 21 |
| PRFZZ | 2815-411-5791 | COVER, TIMING GEAR: 10899082 (19207) | EA | 1 | * | * | * | * | * | * | * | * | 6 | 22 |
| XAFZZ | | COVER, GEAR: 10899082-1 (19207) | EA | 1 | * | * | * | * | * | * | * | * | 6 | 23 |
| XAFZZ | | PIN: COVER LOCATING 103813 (21450) | EA | 2 | * | * | * | * | * | * | * | * | 6 | 24 |
| PAFZZ | 5307-420-9787 | STUD, PLAIN: ACCESS COVER MTG 10899066 (19207) | EA | 1 | * | * | * | * | * | * | * | * | 6 | 25 |
| PAFZZ | 5307-851-8981 | STUD, PLAIN: ACCESS COVER MTG, 0.003 IN. OVERSIZE 10899092 (19207) | EA | 1 | * | * | * | * | * | * | * | * | 6 | 25 |
| PAFZZ | 5307-087-7531 | STUD, PLAIN: ACCESS COVER MTG, 0.003 IN. OVERSIZE 10912511-3 (19207) | EA | 1 | * | * | * | * | * | * | * | * | 6 | 25 |
| PAFZZ | 2815-860-0560 | GASKET: GEAR COVER MTG 10889736 (19207) | EA | 1 | * | * | * | * | * | * | * | * | 6 | 26 |
| PAFZZ | 5315-406-3419 | KEY,WOODRUFF: GEAR MTG 7748817 (19207) | EA | 1 | * | * | * | * | * | * | * | * | 6 | 27 |
| PAFZZ | 5310-768-0318 | NUT, PLAIN, HEXAGON: GEAR COVER TO FRONT PLATE MTG MS51967-14 (96906) | EA | 1 | * | * | * | * | * | * | * | * | 6 | 28 |
| PAFZZ | 5310-834-7606 | WASHER, LOCK: GEAR COVER TO FRONT PLATE MTG MS35340-48 (96906) | EA | 1 | * | * | * | * | * | * | * | * | 6 | 29 |
| PAFZZ | 5305-269-3210 | SCREW, CAP, HEXAGON HEAD: TAPPET COVER MTG MS90725-59 (96906) | EA | 14 | * | * | * | * | * | * | * | * | 6 | 30 |
| PAFZZ | 5310-080-6004 | WASHER, FLAT: TAPPET COVER MTG MS27183-14 (96906) | EA | 14 | * | * | * | * | * | * | * | * | 6 | 31 |



Current part is item (18) on diagram. Available at www.oshkosequipment.com

Current part is item (18) on diagram. Available at www.oshkoshequipment.com



TA010712

Figure 6. Camshaft Gear Cover and Associated Parts.

Current part is item (18) on diagram. Available at www.oshkoshequipment.com